



# PROJEXEL

ENGINEERING WORK

## ENGINEERING, CONSTRUCTION & CONTRACTING

Specialized in Pipeline Installation,  
Erection Works, Machine Installation

# ABOUT US

---

Projexel Engineering is a leading contracting company with expertise in providing high-quality engineering services in pipeline installation, erection works, and machine installation. We specialize in delivering projects on time and within budget while ensuring the highest standards of safety, quality, and efficiency.

Our team of highly skilled professionals, combined with state-of-the-art technology and equipment, allows us to offer tailored solutions for clients across various industries, including oil & gas, power, manufacturing, and infrastructure development.

## OUR MISSION

---

To be a trusted partner in delivering exceptional engineering solutions, ensuring safety, reliability, and excellence in every project we undertake.

## OUR VISION

---

To become a global leader in the field of pipeline construction, mechanical erection, and machine installations, recognized for our innovation, quality, and commitment to customer satisfaction.

# OUR APPROACH



## SAFETY FIRST

At Projexel Engineering, safety is at the core of everything we do. We adhere to the highest safety standards and ensure our workforce is continuously trained to mitigate risks and avoid accidents.

## QUALITY ASSURANCE

We are committed to delivering projects that meet or exceed industry standards. Our quality control processes ensure that each phase of the project is completed with the highest precision.

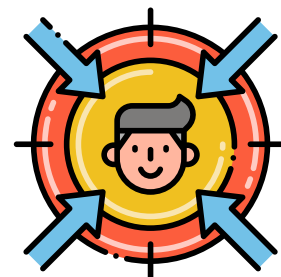


## TIMELY DELIVERY

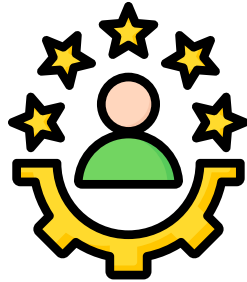
We understand the importance of deadlines in contracting work. Our efficient project management practices allow us to deliver on time, even under challenging conditions.

## CUSTOMER-CENTRIC SOLUTIONS

Our team works closely with clients to understand their unique needs, providing personalized solutions that guarantee satisfaction.



# EXPERIENCE & EXPERTISE

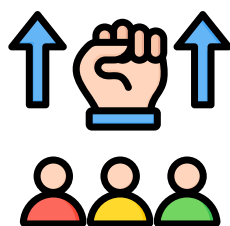
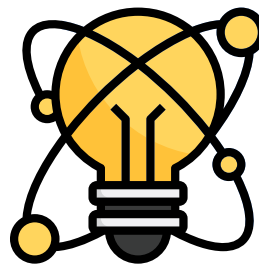


## EXPERIENCE & EXPERTISE

Years of experience in managing complex and large-scale engineering projects.

## INNOVATIVE SOLUTIONS

We use the latest technology and engineering practices to deliver cost-effective and high-performance solutions.



## SKILLED WORKFORCE

Our team is composed of industry experts with specialized skills in pipeline construction, mechanical erection, and machine installation.

## COMMITMENT TO QUALITY & SAFETY

Projexel Engineering adheres to the highest standards of safety and quality control, ensuring that every project is executed flawlessly.





# TYPE OF PIPELINE WORK

## Specialized in Pipeline

**INSTALLATION  
ERECTION WORK**

**EQUIPMENT ERECTION**

## All Type of Pipeline

**S.S PIPING**

**M.S PIPING**

**STRUCTURE  
FABRICATION &  
ERECTION**

**FIRE FIGHTING WORK**

**HVAC WORK**

**CABLE TRAY WORK**

**UTILITY PROCESSES**

**EQUIPMENT ERECTION**

**PAINTING &  
INSULATION WORKS**

**EQUIPMENT ERECTION**

# CORE SERVICES



## PIPELINE INSTALLATION

We offer complete pipeline construction services, from design and material procurement to installation and commissioning. Our expertise includes laying pipelines for various applications, including gas, water, and petrochemical industries.

## ERECTION WORKS

Projexel Engineering provides turnkey erection services, including structural, mechanical, and electrical works. Our team is proficient in erecting complex machinery and infrastructure with a focus on precision and safety.



## MACHINE INSTALLATION

We specialize in the installation, alignment, and commissioning of heavy machinery and equipment. From manufacturing plants to power stations, we ensure that all installations are carried out efficiently, minimizing downtime and ensuring optimal performance.

# KEY PROJECTS



## OIL & GAS PIPELINE PROJECT

A multi-million-dollar project for the installation of high-pressure pipelines in remote locations for a leading oil company.

## POWER PLANT ERECTION

Structural and mechanical erection of a 500 MW power plant, including the installation of boilers, turbines, and auxiliary systems.



## MANUFACTURING FACILITY MACHINE INSTALLATION

Complete machine installation and commissioning for a state-of-the-art manufacturing plant, improving production efficiency and output.



# INDUSTRIAL SERVICES



**HVAC SYSTEM**



**FIRE SAFETY**



# **INDUSTRIAL SERVICES**



**Heavy Industrial Erectors, Structural Fabricators  
& Piping for industries**



**Air Compressor, Boiler, Water Supply and  
Cable Tray Work for HT and LT Cable.**



# INDUSTRIAL SERVICES



**Erection and Installation of Process Piping Systems**



**Welding Machine for SMAW and GTAW with Tools**

# **INDUSTRIAL SERVICES**



**Pipe Line Insulation and Cladding Work**



**Equipment Installation like  
AHU, FDC and Chiller etc**



# INDUSTRIAL SERVICES



**Cooling Tower and Chilled Water Pump Installation**



**Refrigeration Plant Installation and Piping**



# IOCL REFINERY PROJECTS

Location: Dumad, Vadodara





# MEGHAMANI FINECHEM **PROJECTS**

Location: Dahej





# DAIRY PROJECTS

**Dr. Kurien Amul Cheese Plant**

**Location: Khatraj**

**Client: Fresco System**





# COMPLETED PROJECTS

Reliance Solar Plant | Location: Jamnagar  
Client: HTL Aircon Pvt. Ltd.

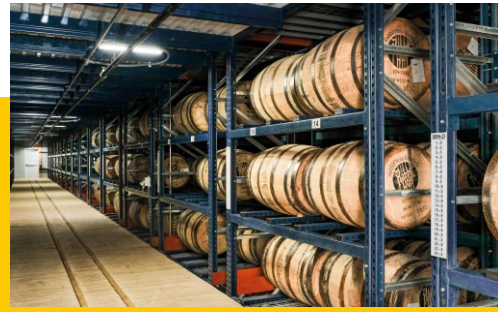




# INDUSTRIES



**BREWERIES**



**DISTILLERIES**



**FOOD & BEVERAGES**



**PHARMACEUTICAL**



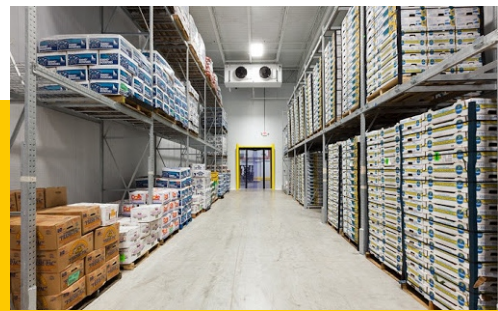
**DAIRIES**



**REFRIGERATION PLANTS**



**ICE-CREAM PLANTS**



**COLD STORAGE**

## **OUR CLIENTS**

**PARIJAT COLD  
STORAGE, BIHAR**

---

**PCDF PROJECT  
BAREILLY, UP**

---

**MEGHMANI  
FINECHEM LTD., DAHEJ**

---

**RADHA GOVIND COLD  
STORAGE, HATRAS**

---

**IDMC, GUJARAT**

---

**HTL AIRCON PVT. LTD.**

---

**FRESCO SYSTEM**

---

**IOCL, DAJEJ REFINERY**

---

**HARJI ENGINEERING  
WORKS PVT. LTD**



# PROJEXEL

ENGINEERING WORK

Address: Kh No.534, First Floor, Siraspur Libaspur Road, Delhi- 110042  
Contact: +91 9911130898 | E-mail: [projxelengineeringdumad@gmail.com](mailto:projxelengineeringdumad@gmail.com)